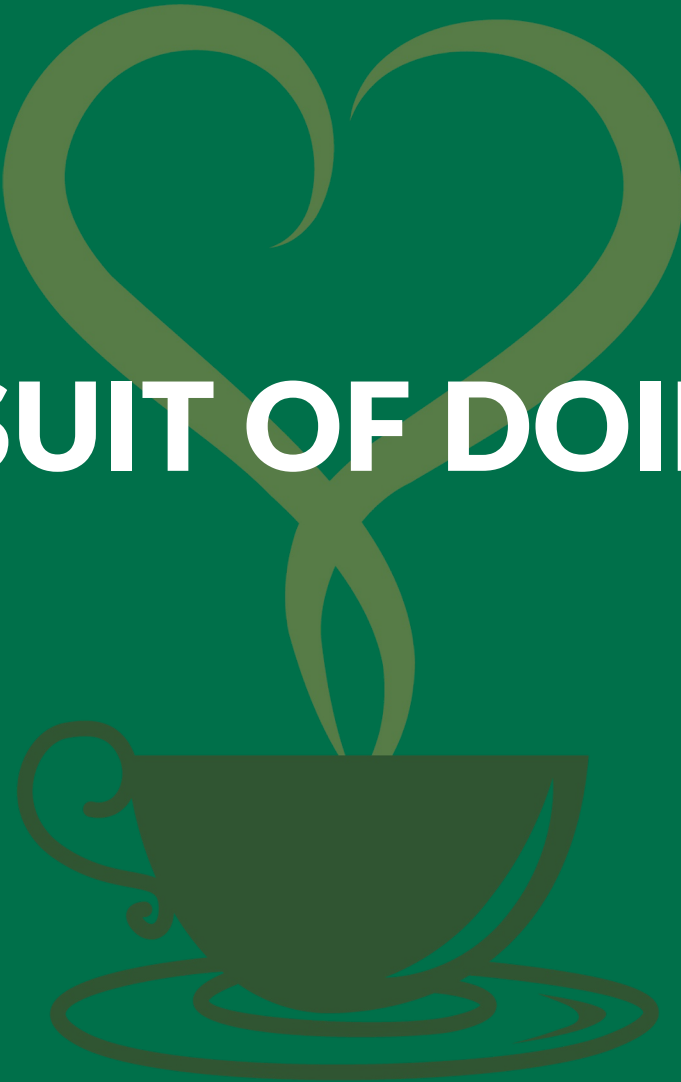


THE PURSUIT OF DOING GOOD





JAMES LAYMAN

- Direct the Association of Washington Student Leaders.
- Been involved with student activities for 20+ years.
- Active with J.E.D.I (Justice, Equity, Diversity, and Inclusion) work
- Believe strongly in the power of how student activities.





**"Every system is perfectly designed to
get the results it gets."**

Dr. Paul Batalden



Our work = people work



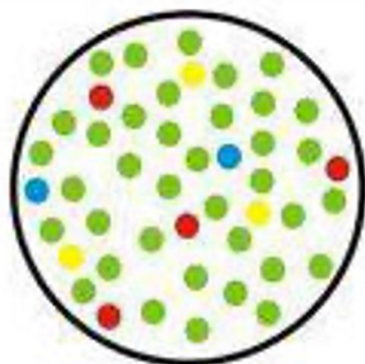
This work is not an escape room.



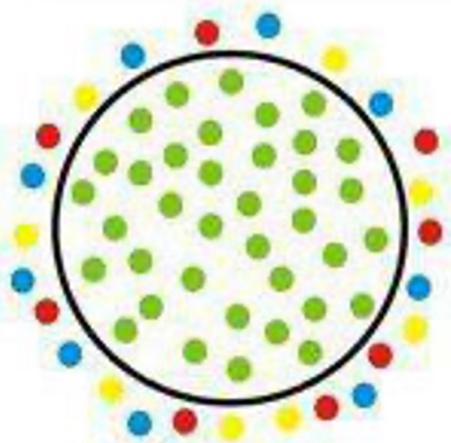
Perspectives... "I never thought about that before."



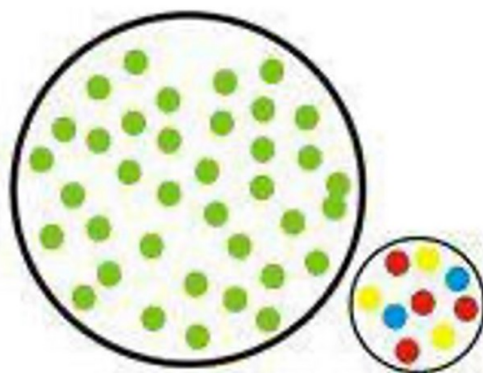
**Actual depiction
of this work.**



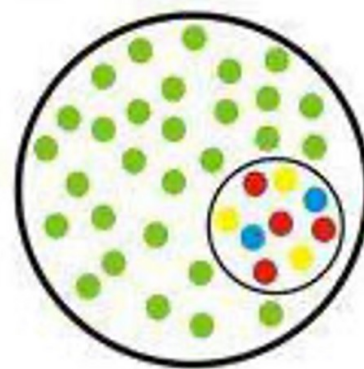
Inclusion



Exclusion



Segregation



Integration

**WHAT CAN YOU CONTROL?
WHAT CAN'T YOU CONTROL?**



**LANGUAGE CAN BE A BARRIER.
LEARN. DEFINE. PROCESS.**



**GO SLOW TO GO FAST.
THIS IS NOT A MARATHON.**



**GROUPS/PEOPLE MOVE AT
THE SPEED OF TRUST.**



**CREATE YOUR OWN CONTAINER.
THERE IS NOT ONE WAY TO MOVE
THE NEEDLE.**



LISTEN. LEARN. LISTEN AGAIN.



**EVERYTHING WE NEED TO MAKE
POSITIVE CHANGE IS ALREADY HERE.**



Invitation to Brave Space

by: Micky Scottbey Joney

Together we will create brave space.

Because there is no such thing as a "safe space."

We exist in the real world

We all carry scars and have caused wounds.

In this space.

We seek to turn down the volume of the outside world.

We amplify voices that fight to be heard elsewhere,

We call each other to more truth and love

We have the right to start somewhere and continue to grow.

We have the responsibility to examine what we think we know.

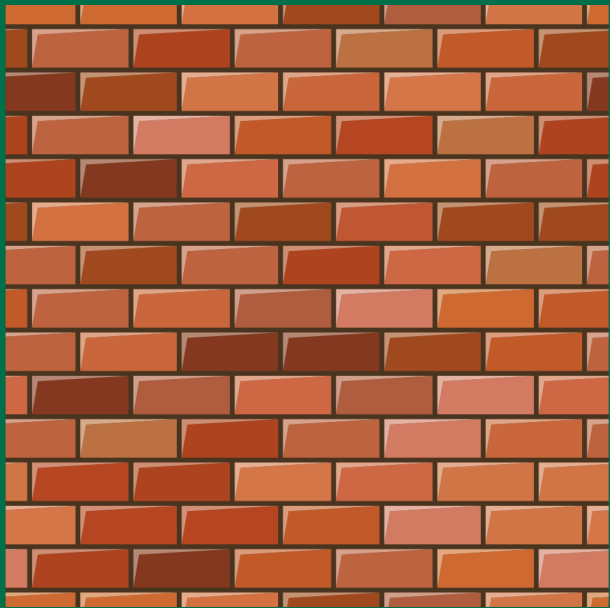
We will not be perfect.

It will not always be what we wish it to be.

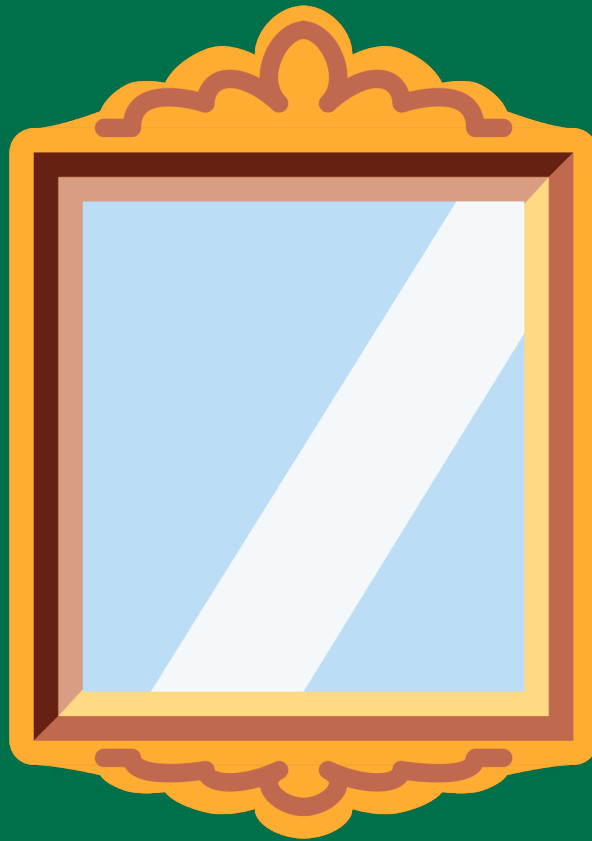
But it will be our brave space together.

And we will work on it side by side

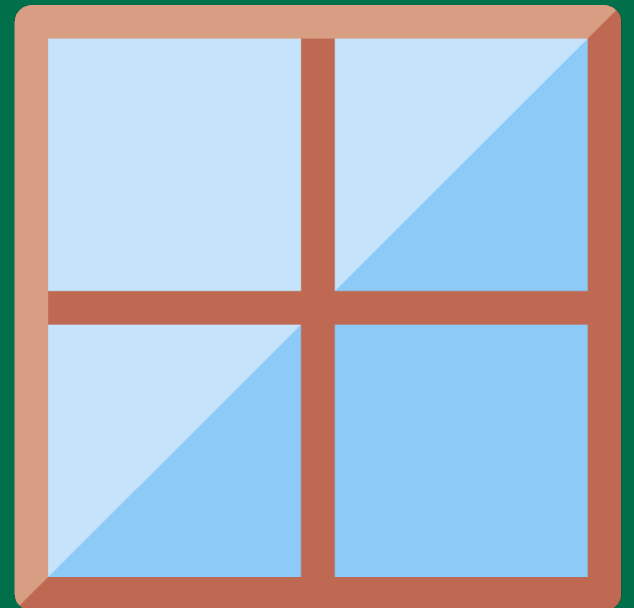




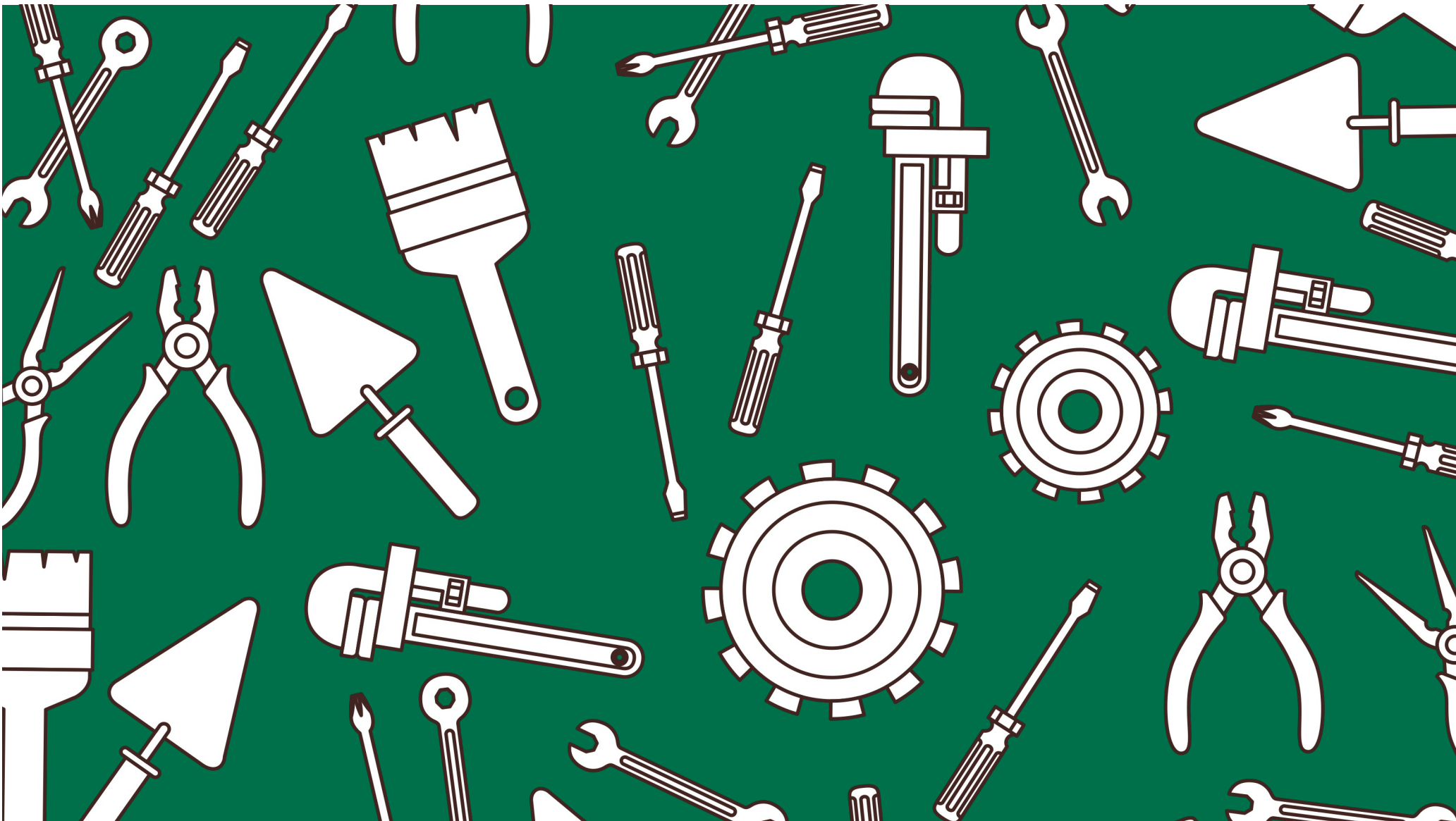
WALLS



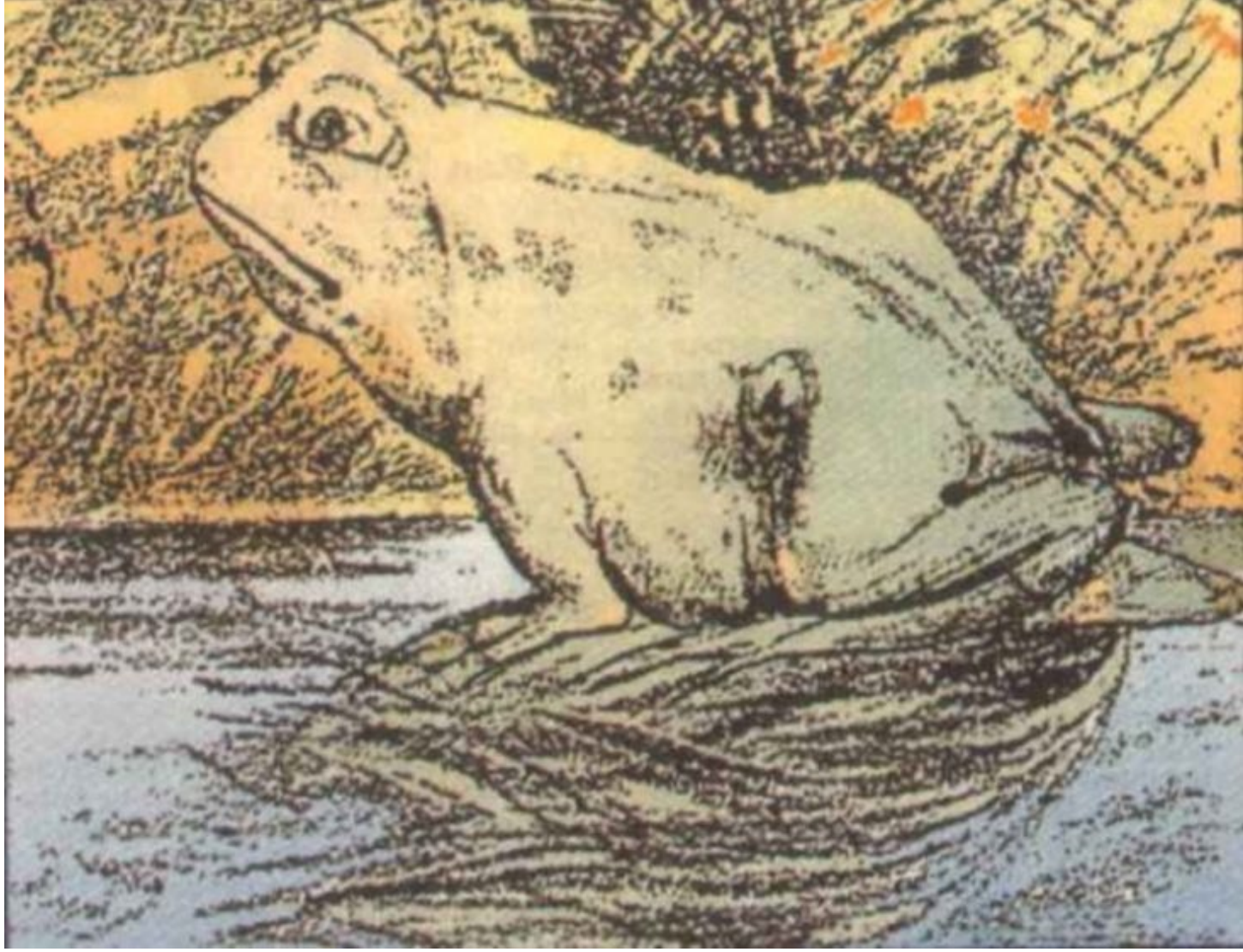
MIRRORS



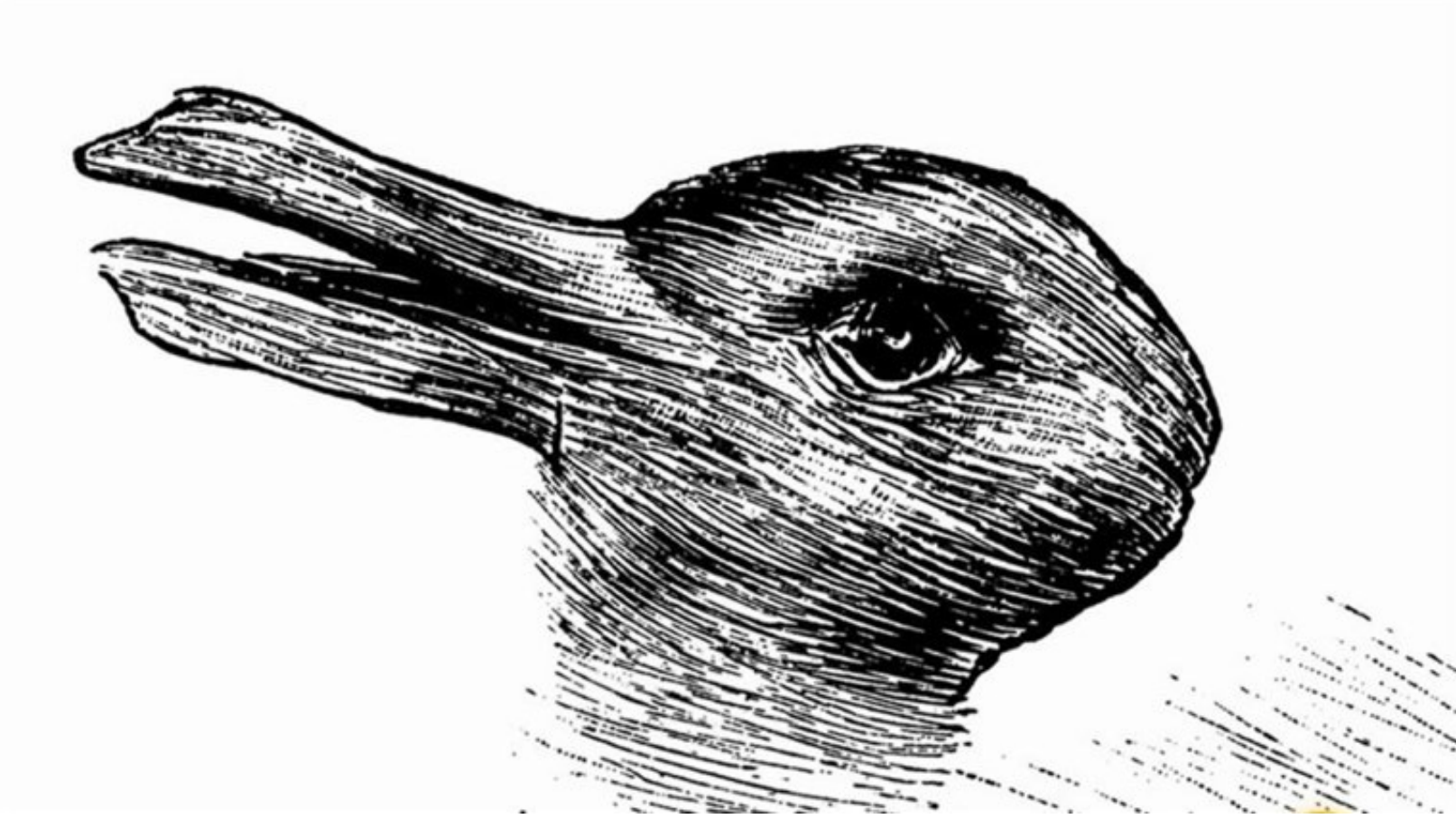
WINDOWS

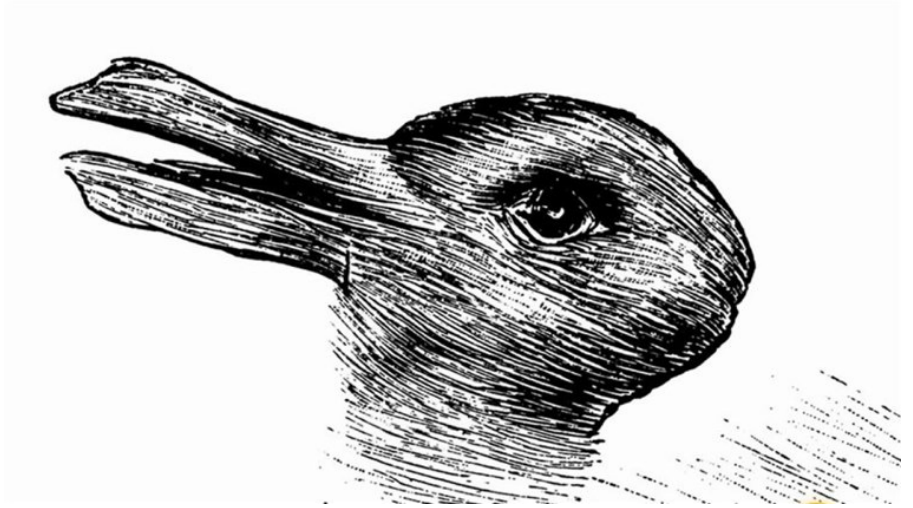


What do you see?

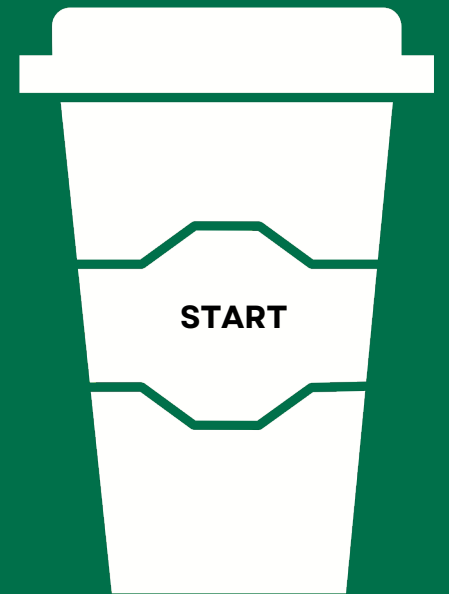


What do you see?





NEXT STEPS



THE PURSUIT OF DOING GOOD

